

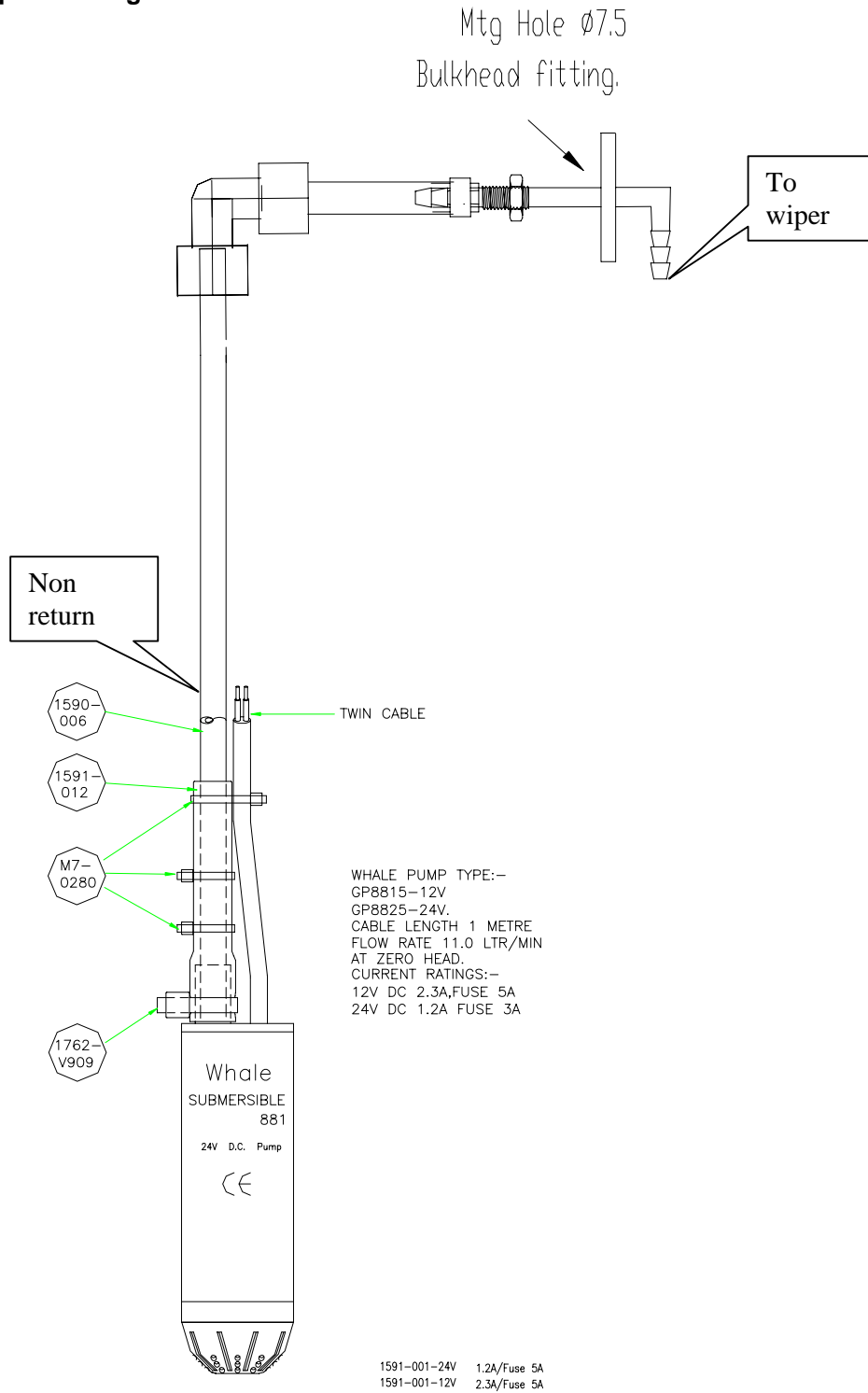
Type IM-1591-183-24V Wash system description

The type IM-1591-183-24V wash system consists of an 18 litre wash bottle complete with mounting bracket and 3 self venting submersible pumps.

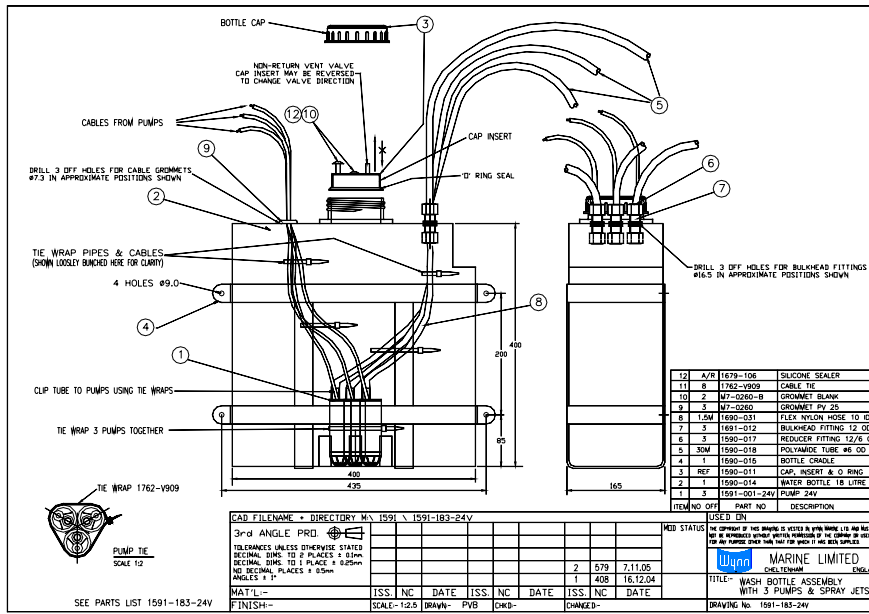
The system is design for small sized vessels with a maximum of 6 wipers.

The pumps are operated with a Cole Hershee switch or with the Wynn controllers and control systems.

Typical configuration



Wash system and dimensions



Technical information Pump.

Venting Submersible Pump

- Self-venting design eliminates air locking
- Designed to be dropped into a water tank
- Simple, compact and low-cost pump
- Ideal for two to three hot/cold mixer faucet outlets
- Suitable for dual purpose manual/electric system
- Inexpensive way to update a manual to an electric system
- Pumps fresh water, saltwater and diesel
- Low power consumption
- Very quiet

Low power consumption

Description Product Code:		Submersible 881 GP8825	
Voltage:		24V DC	
Recommended Fuse Size:		3 amp automotive	
Hose Connections:	To suit 10 mm or 13 mm ($\frac{3}{8}$ " or $\frac{1}{2}$ " Bore Flexible Hose		
Connection to Quick Connect 15 mm:	Use WX1511 Adaptor and then WX1504		
Materials:	ABS plastic, stainless steel, Nitrile, PP		

Performance Data	
Head:	Flow rate per minute and current draw
0 m (0 ft)	11 ltrs (3 US gals) 2.8 amps
1 m (3 ft)	9.8 ltrs (2.6 US gals) 2.7 amps
3 m (9 ft)	8.75 ltrs (2.3 US gals) 1.35 amps